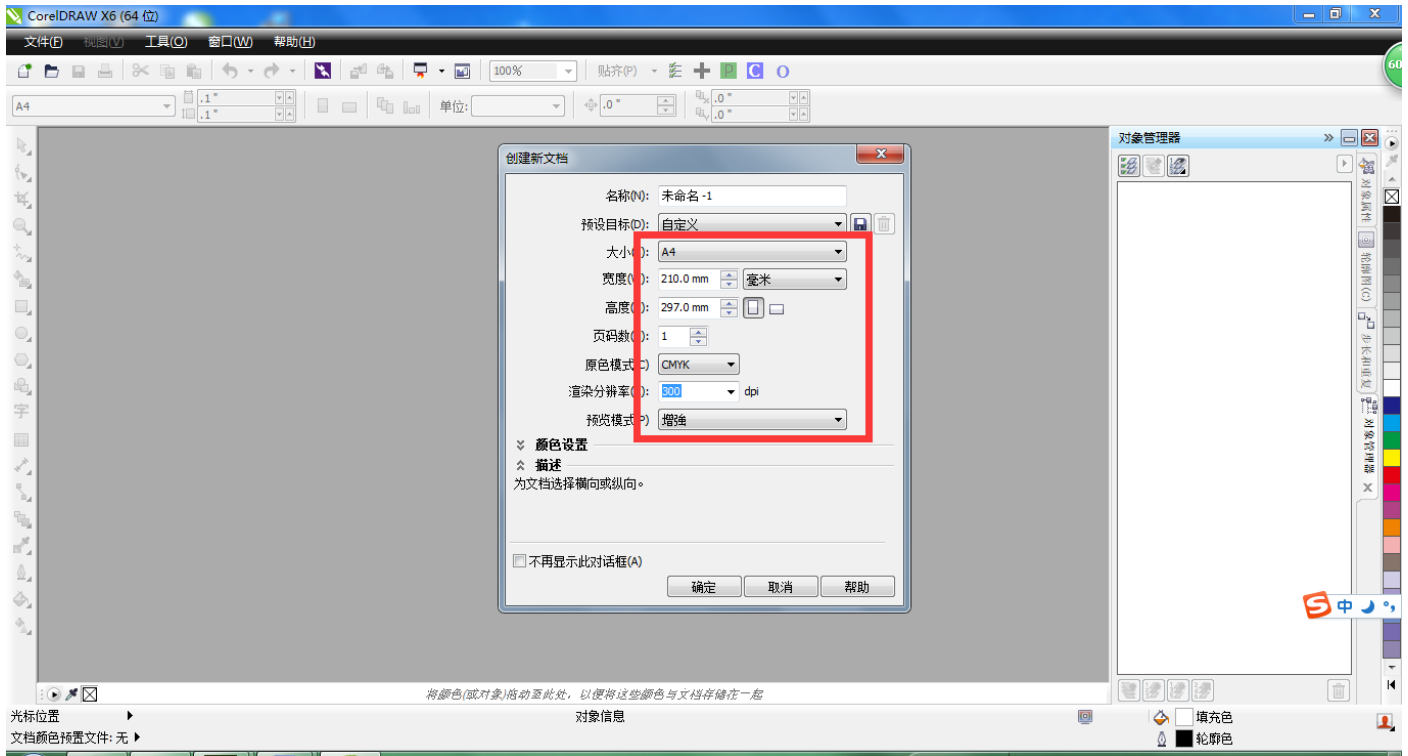


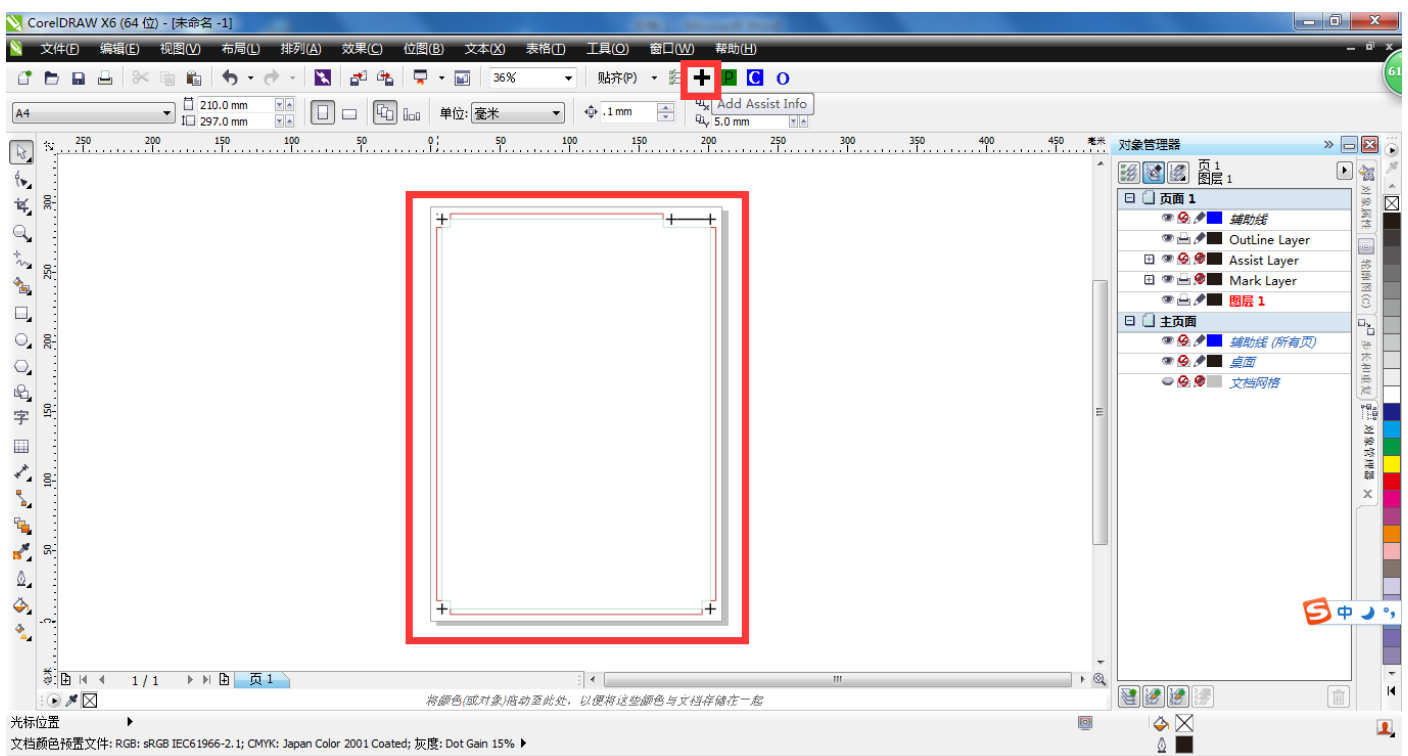
# How to make label

First make sure the CorelDRAW plug-in and sheet cutting machine driver has been installed successfully.

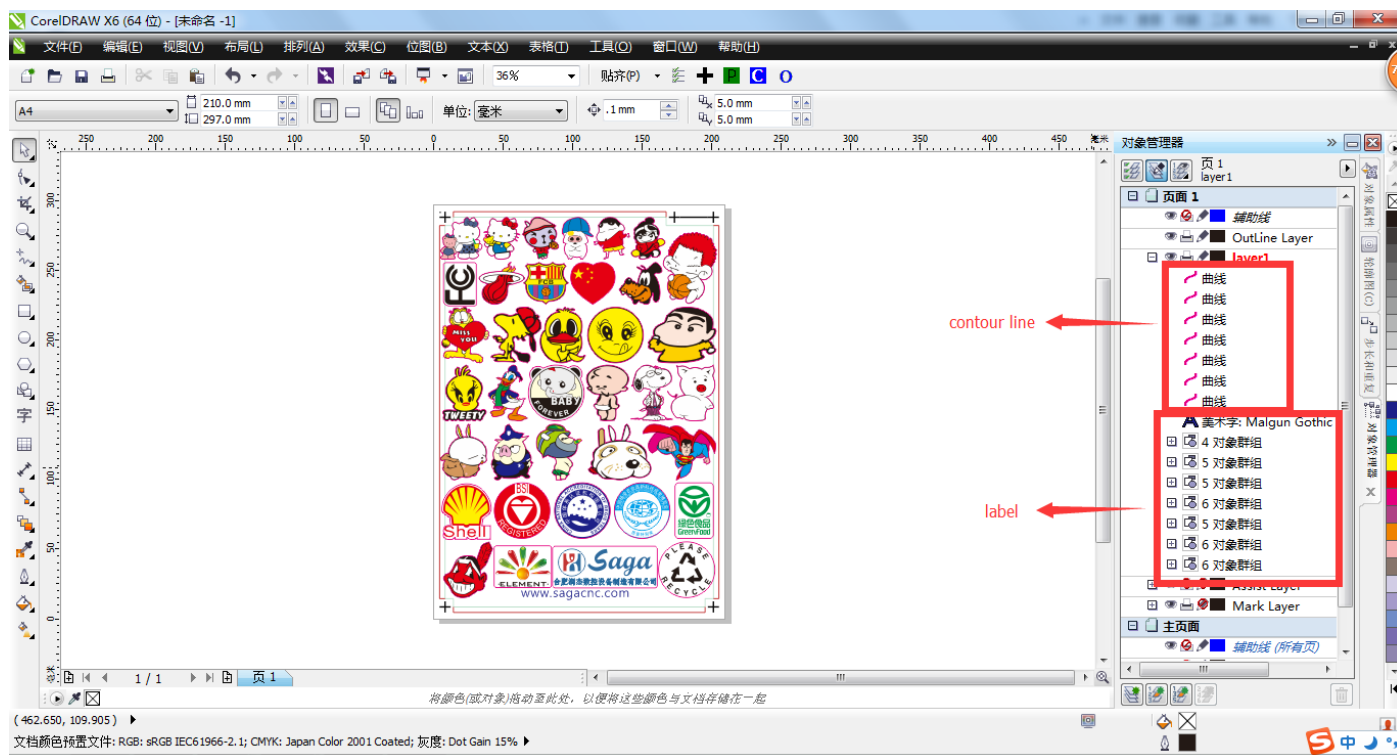
Step1: Turn CorelDRAW on, Setting document size.



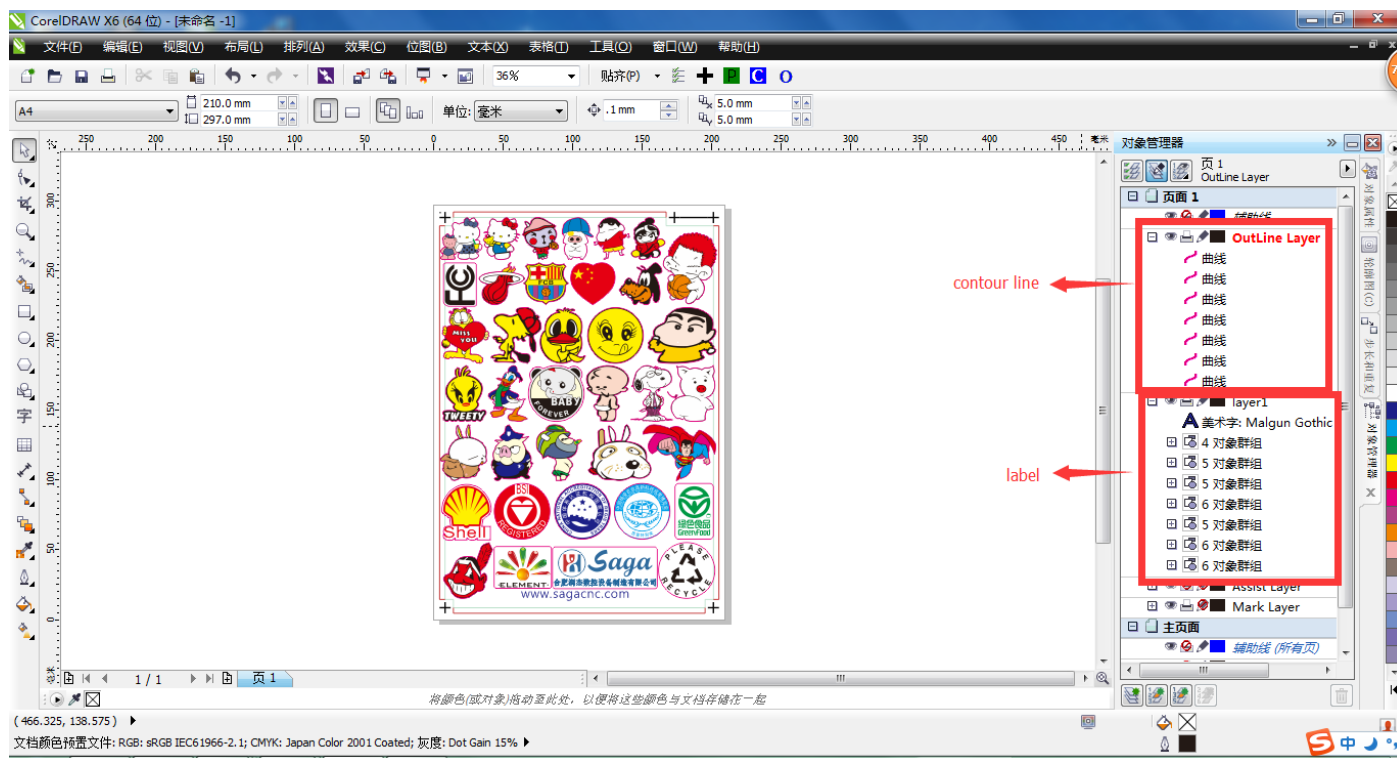
Step2: Add marks



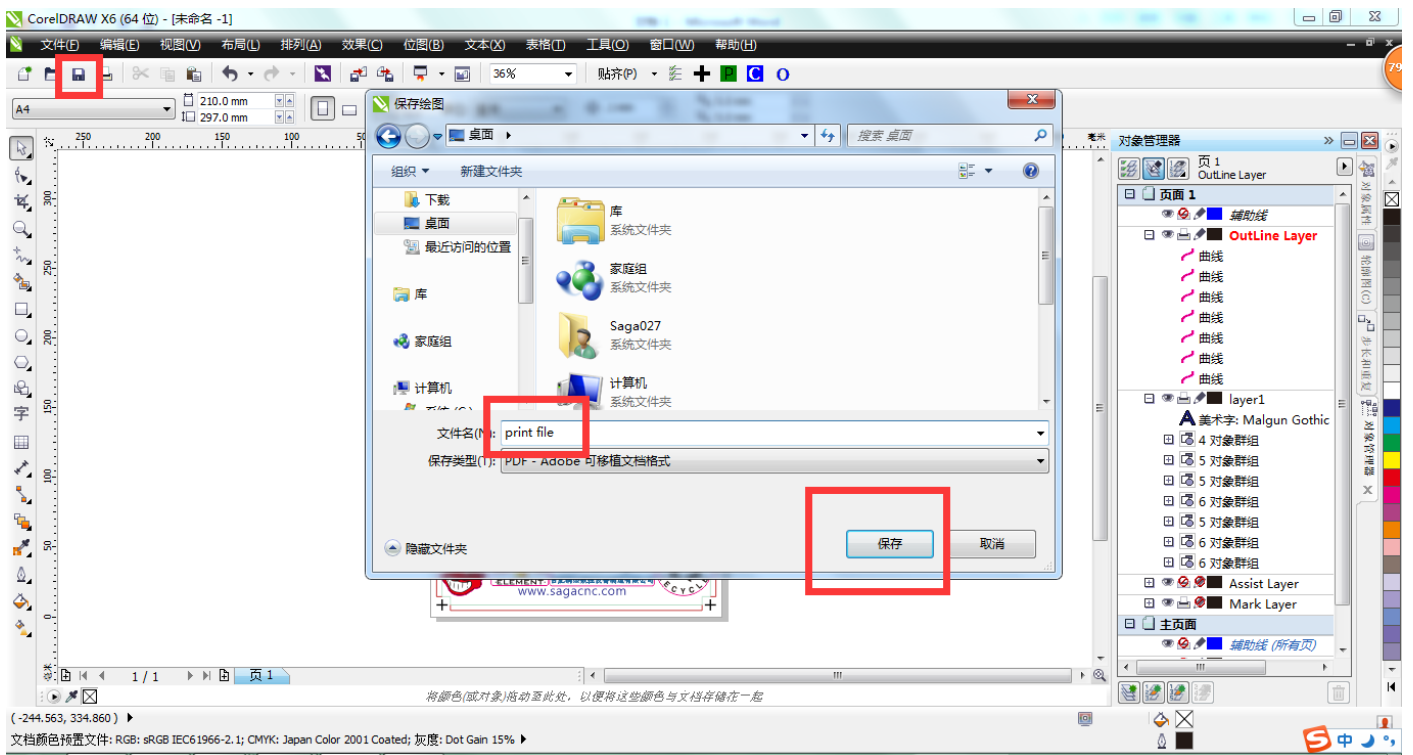
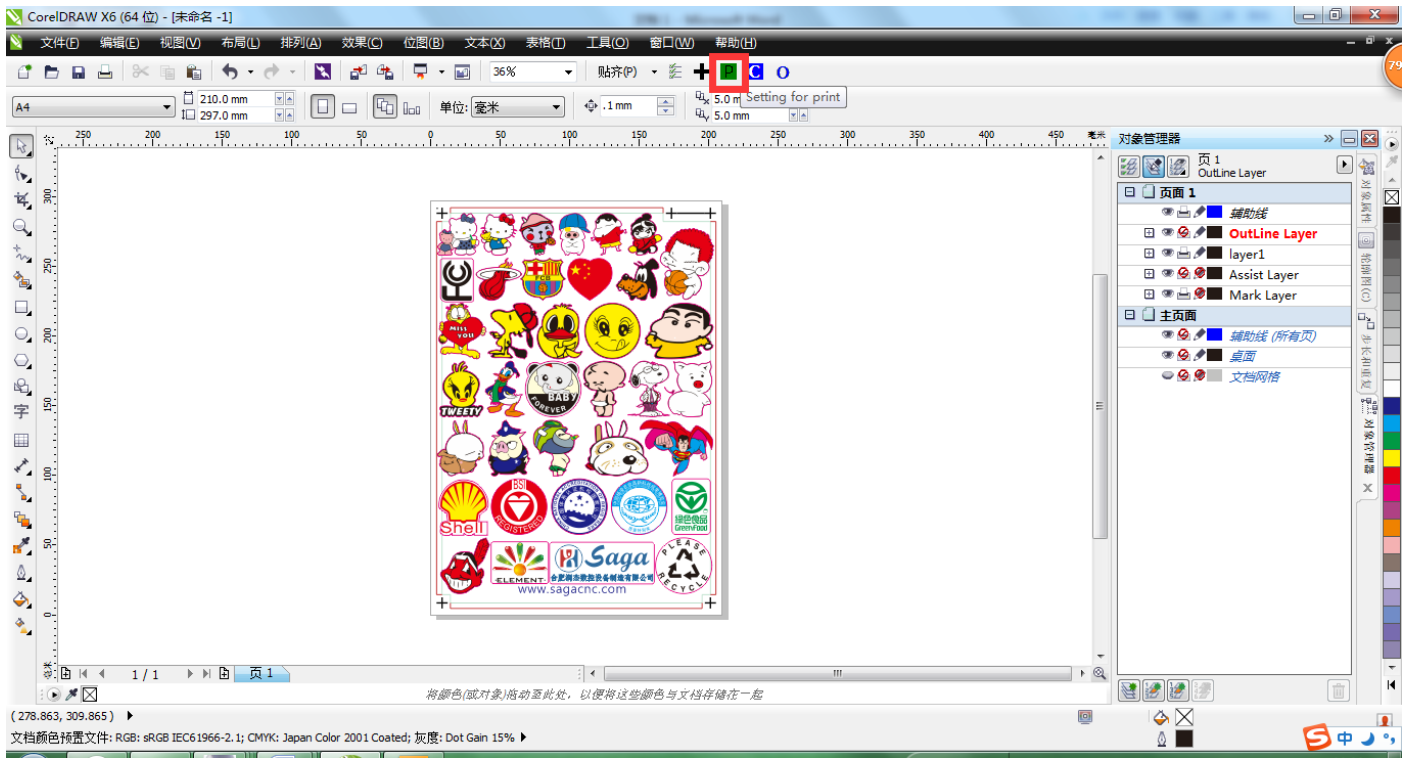
Step3: Import label (to make sure that the label file includes label and contour lines)



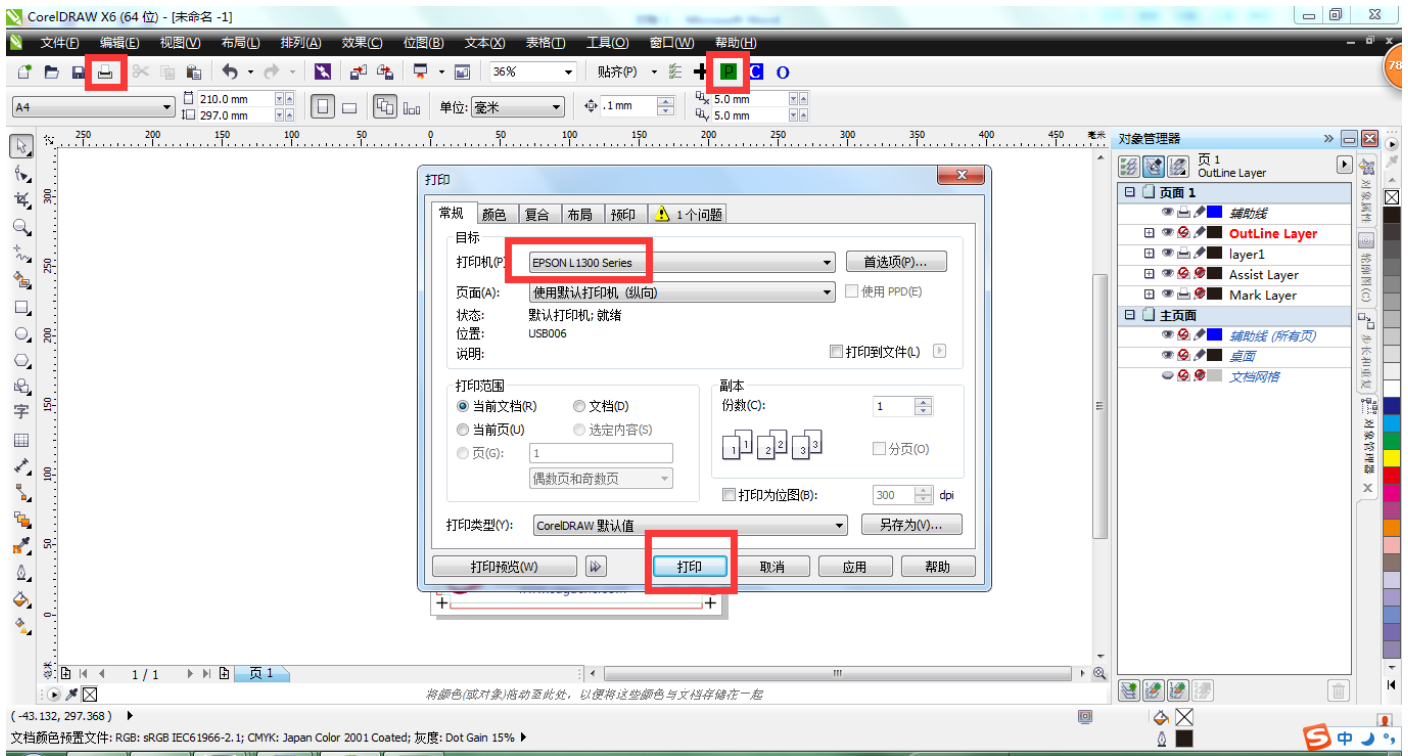
Step4: Move “contour line” to “OutLine Layer”(“label” in “layer1”, “contour line” in “OutLine Layer”)



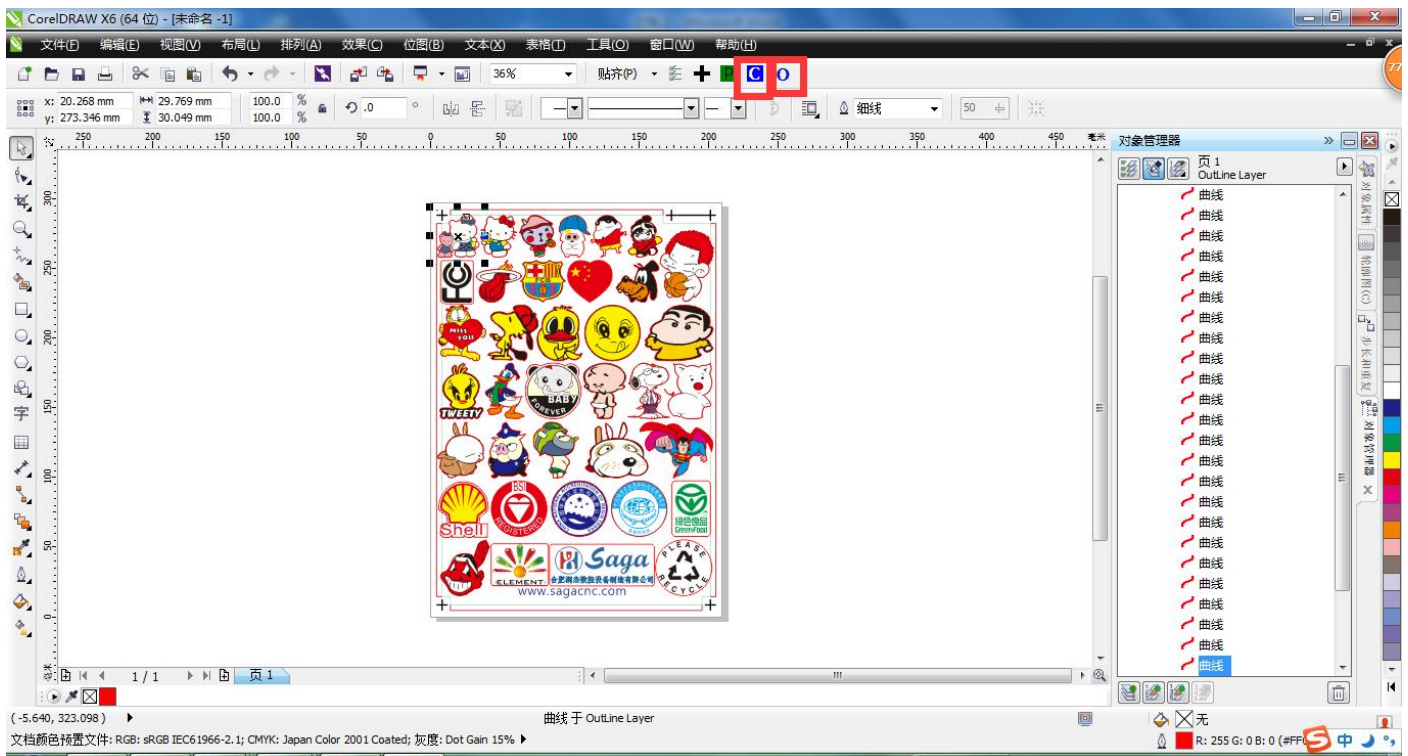
Step5.1: Save print file, Click P, and then save the print file, easy to print)

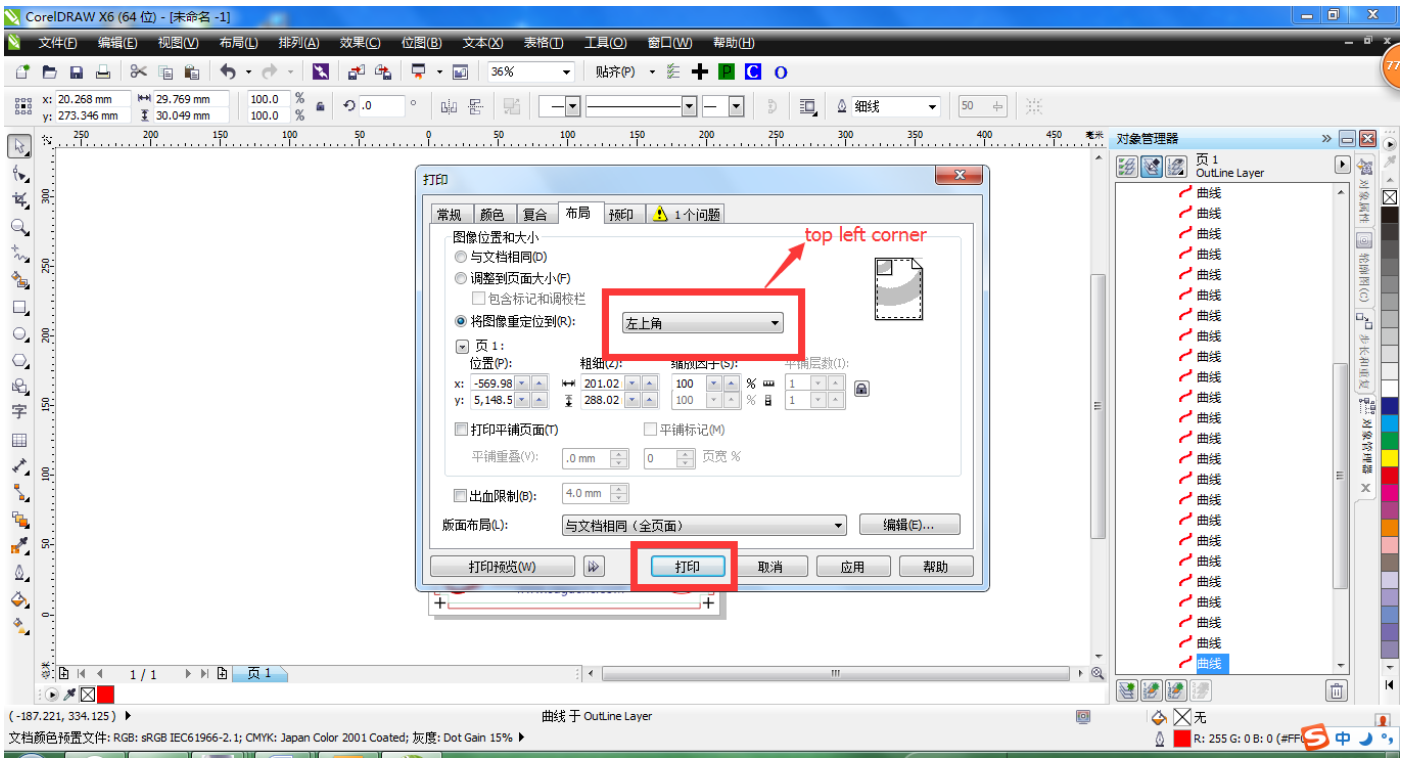
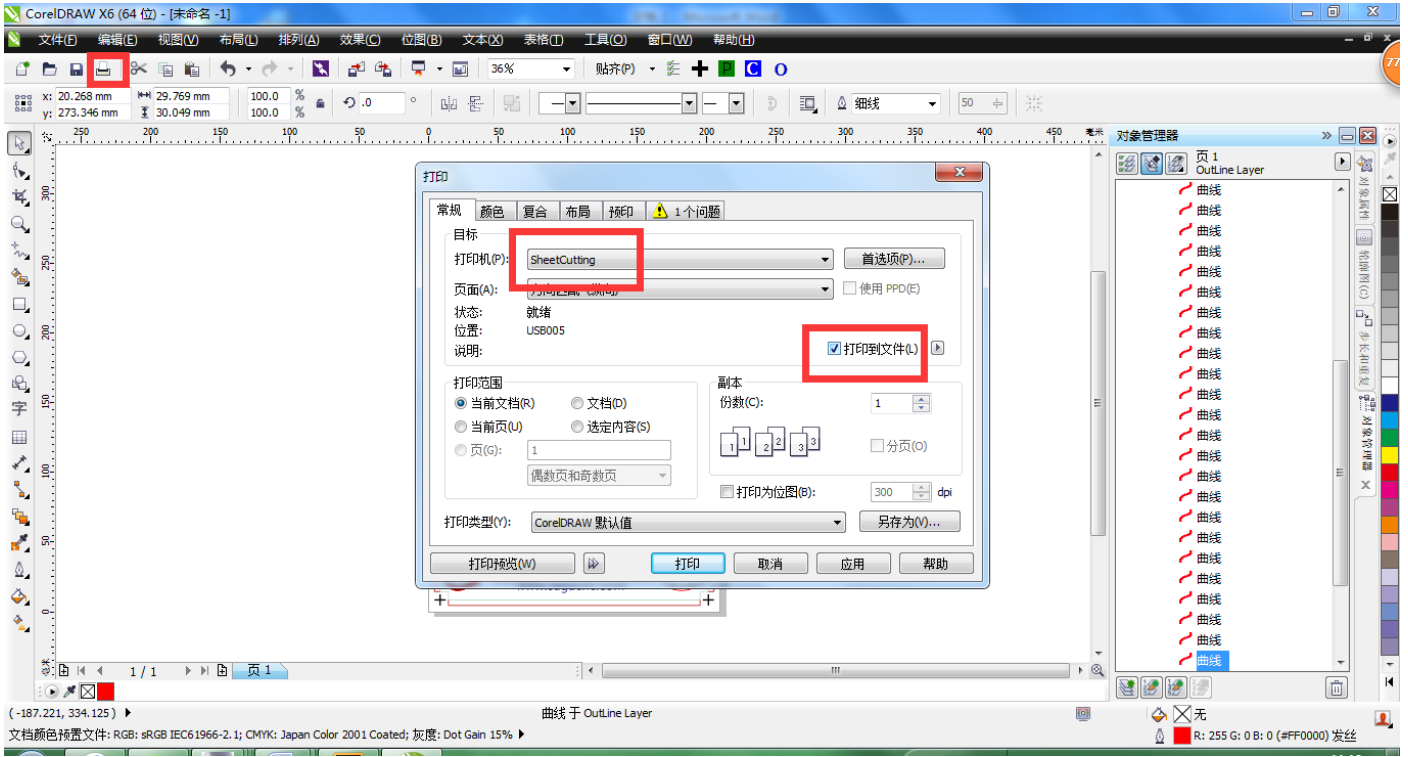


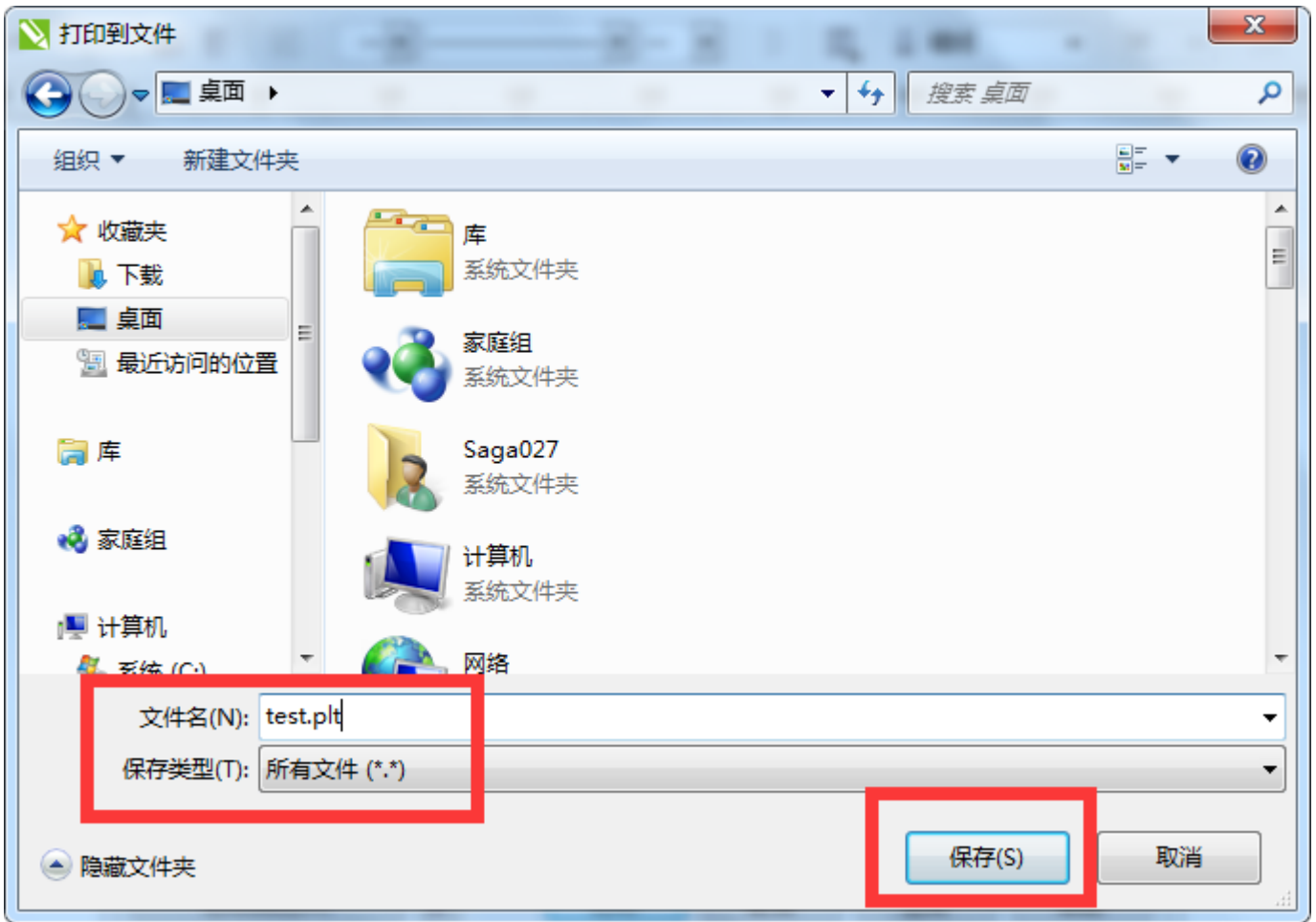
Step5.2: Click P ,Connect to printer, print directly.



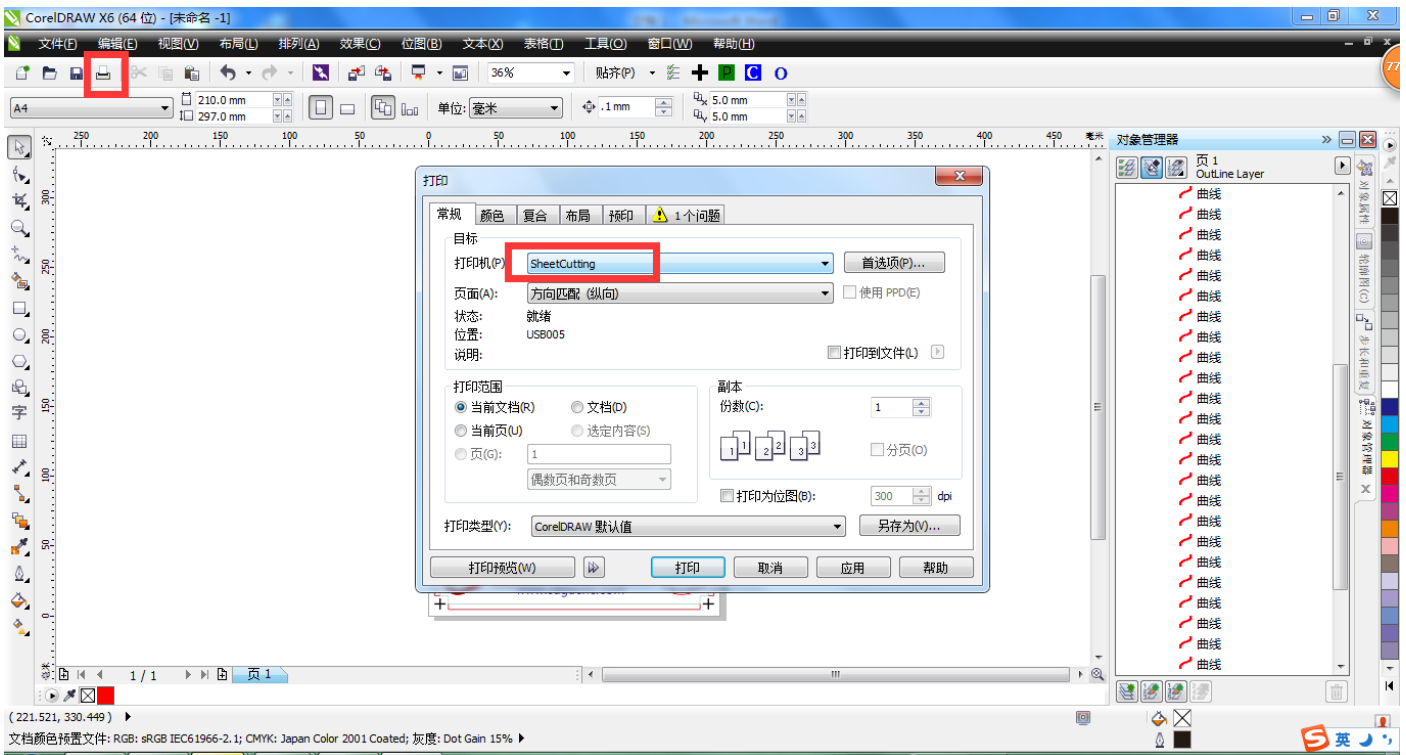
Step6.1: Save cut file , Click “O” than to click “C” to save the cut file (save--sheet cutter --print to flilie--top left corner—print—all files—file name.plt—save—move SDcard)

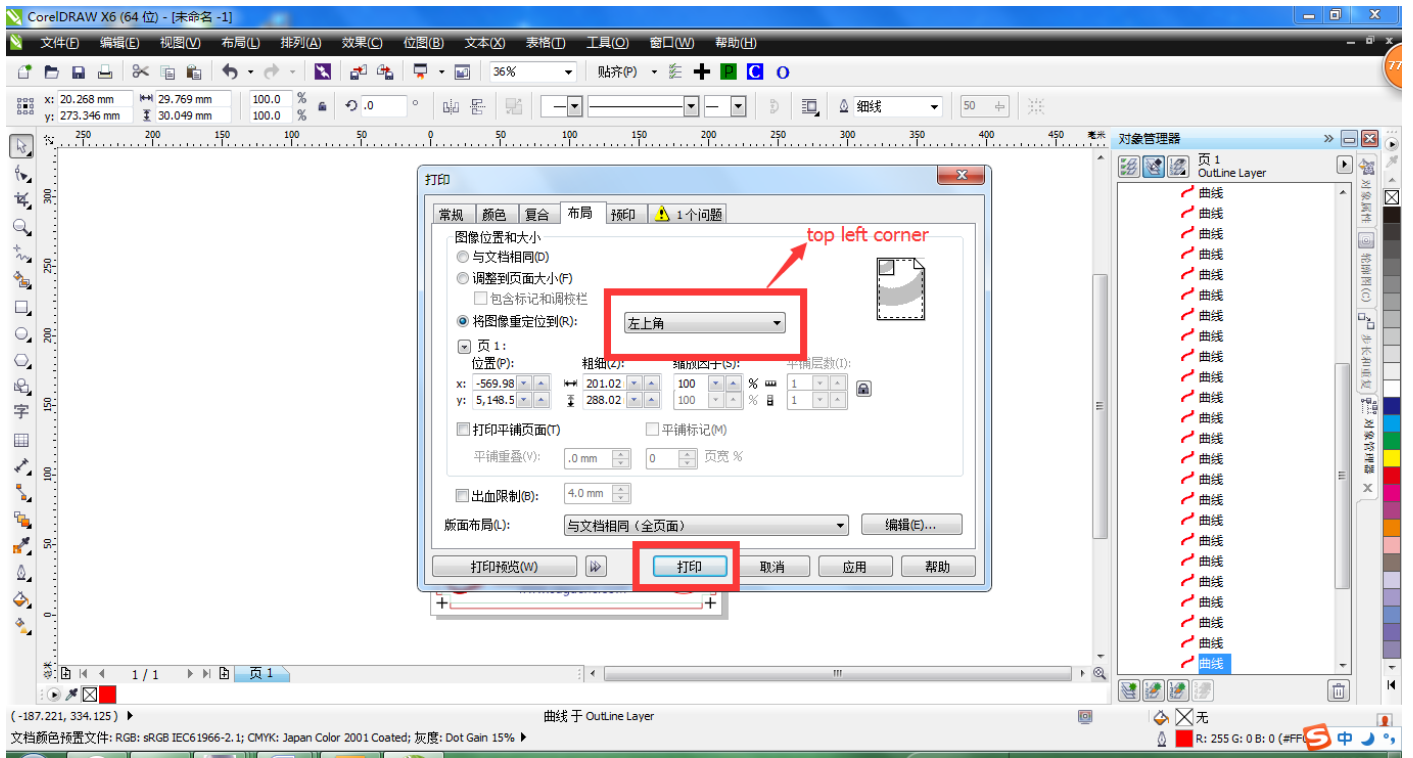






6.2. Use USB cut directly. Click “O” than to click “C”  
 (save –sheet cutter –top left corner—print )





There are two kinds of working:SDcard and USB

1:SD card

Step1: Installed print materials in the machine tray.





Step2: Installed blade holder (make sure the blade force is appropriate)



Step3: Click “option” check the cut file.(speed up and down to select file, force left and right to select folder)





Step4 : After select cut file,click “enter”, display the number of cutting,( speed up and down, force left and right can Adjusting number)



Step5:click “enter”the machine will be feed paper and scan than cut label.

## 2: USB direct output

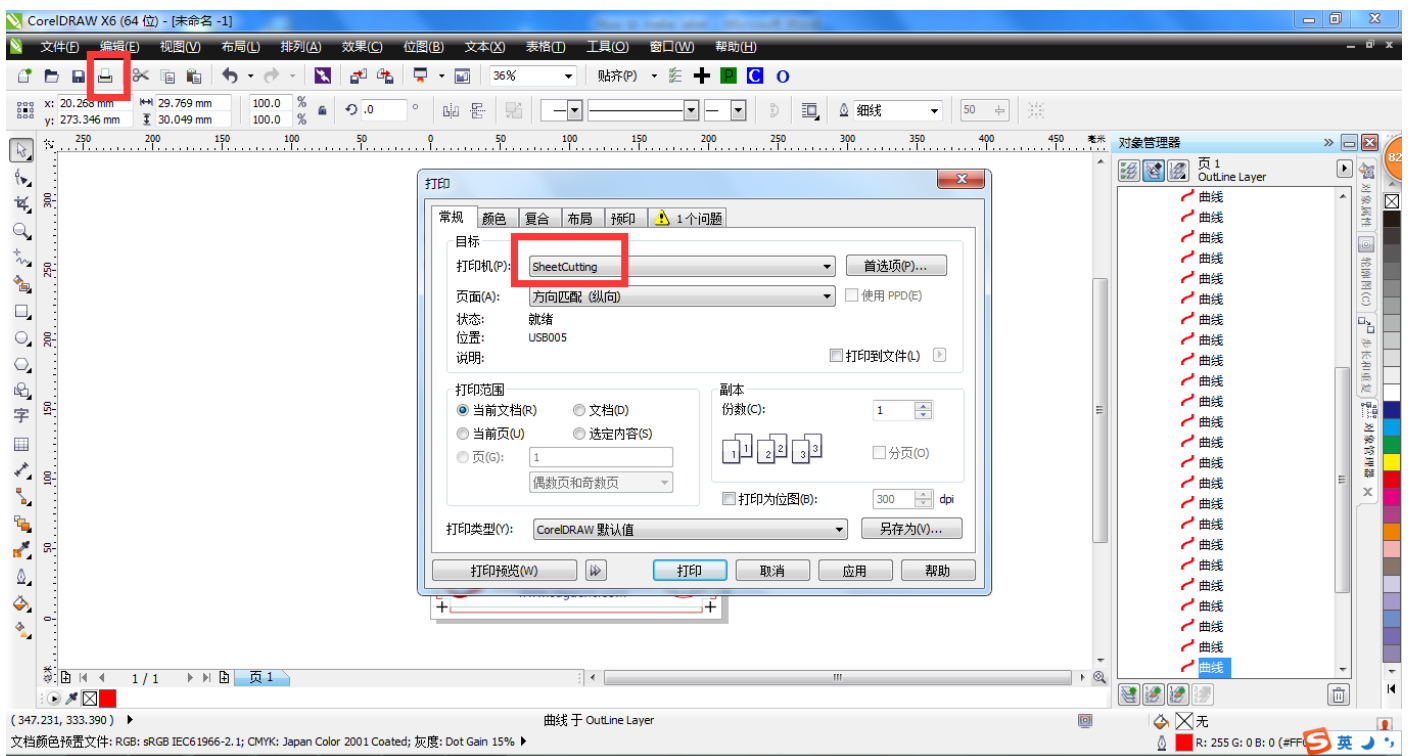
Step1: Installed print materials in the machine tray.



Step2: Installed blade holder (make sure the blade force is appropriate)



Step3:click “O”and than click”C”,print directly—sheet cutter –top left corner--print



Step4: the machine will be feed paper.and scan than cut label.